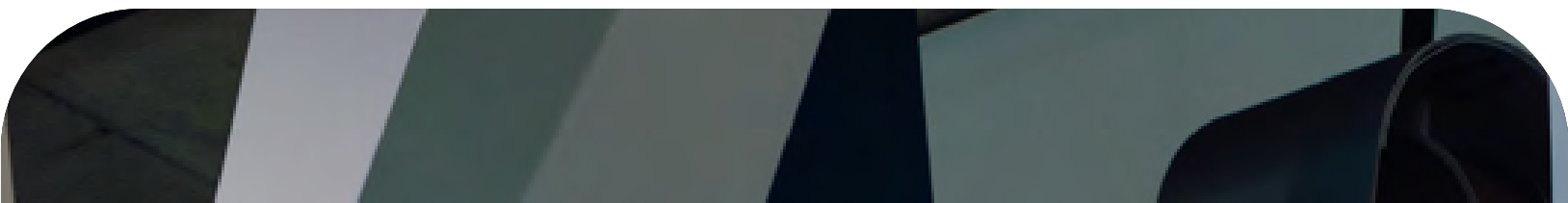
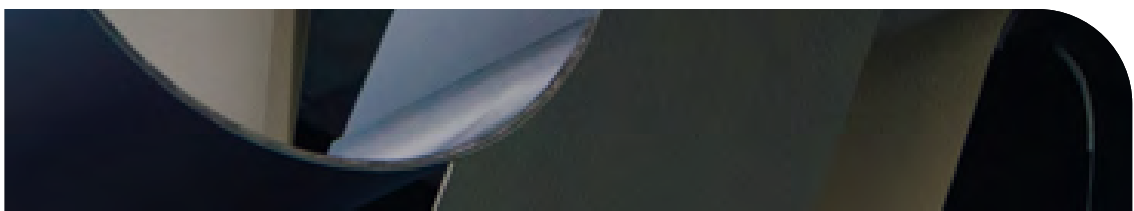
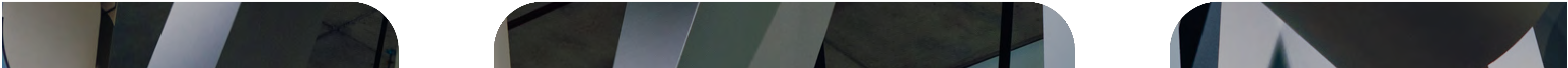
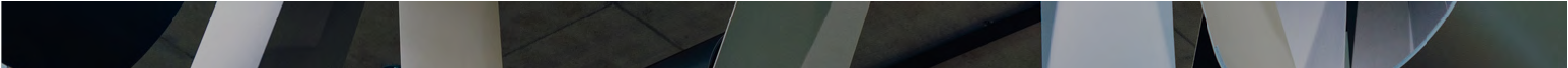


T H E     R O W E

THEROWE.LONDON



**NEXT LEVEL  
WORKSPACE**

In the heart of eclectic E1



THE  
**FULL  
STACK**





THE  
ROWE

# STACKED WITH POSSIBILITY

When it comes to workspace, there are levels to this game. The Rowe offers brand new workspace from 7,000 - 130,000 sq ft, available as fitted or unfitted office space.

Get more than you bargained for in the heart of E1 with stacks of private terraces, pioneering tech, striking art, and rooftop entertainment space. It all adds up to an unmissable opportunity.






Discover brand-new workspace at The Rowe, where you can choose between the blank canvas of unfitted workspace or the convenience of fully fitted workspace, with 7,000 - 130,000 sq ft available.

# WORKSPACE **YOUR WAY**



Fourth floor fitted reception



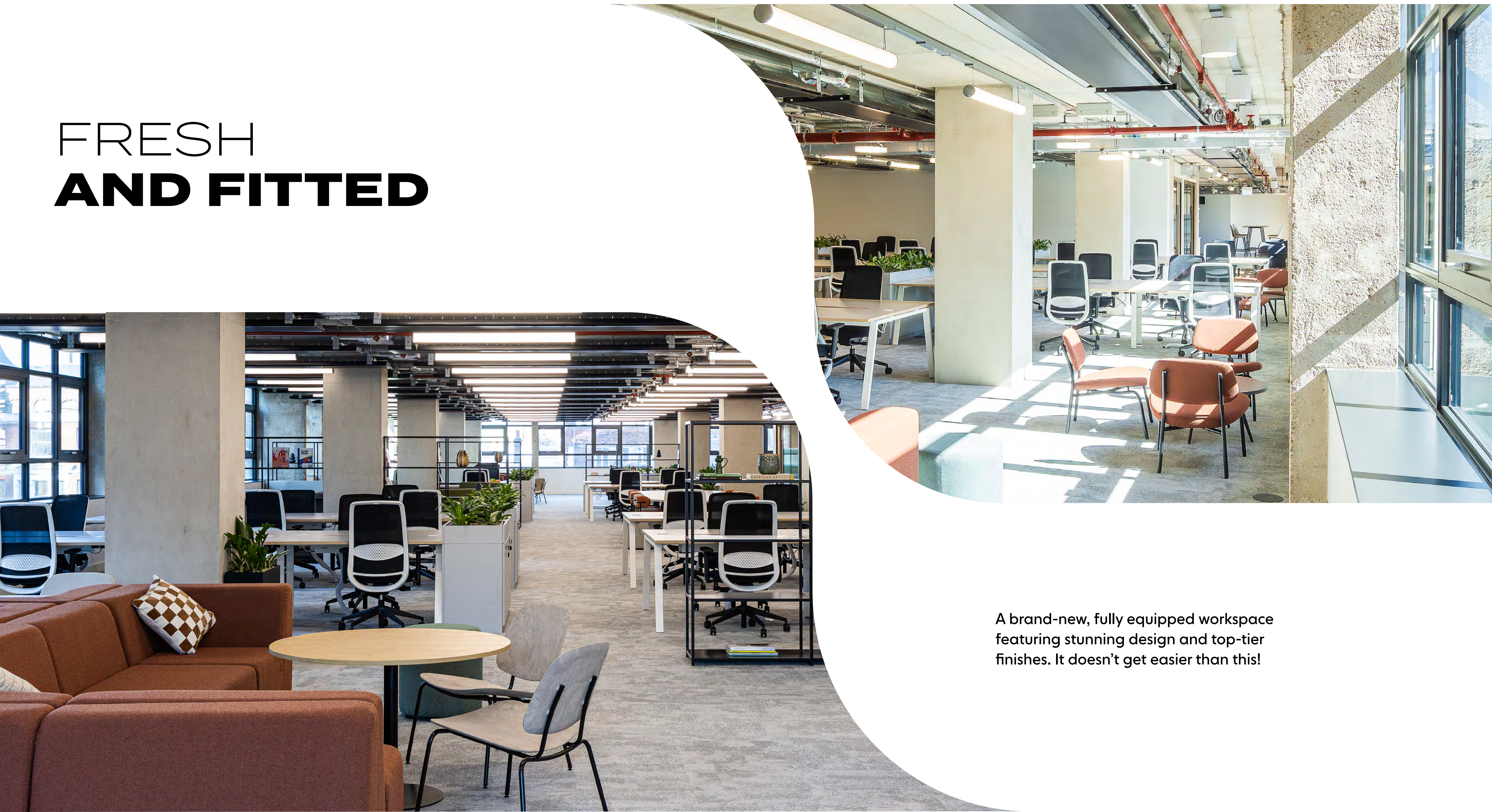


# **NEXT LEVEL** OFFICE SPACE

Light, bright floorplates ready to be designed with your business in mind. You choose how you make your mark.



# FRESH **AND FITTED**



A brand-new, fully equipped workspace featuring stunning design and top-tier finishes. It doesn't get easier than this!



# SCHEDULE OF ACCOMMODATION

FLOOR			OFFICE (SQ FT)	TERRACE (SQ FT)	VIEW FLOORPLAN
12	BUSINESS LOUNGE	COMMUNAL TERRACE	818	8,408	
11	AVAILABLE – UNFITTED	TERRACE	13,875	299	
10	AVAILABLE – UNFITTED	TERRACE	13,875	299	
9	AVAILABLE – UNFITTED	TERRACE	13,868	299	
8	AVAILABLE – UNFITTED	TERRACE	13,862	299	
7	AVAILABLE – UNFITTED	TERRACE	13,873	299	
6	koba*		–	–	–
5	koba*		–	–	–
4	AVAILABLE – NEW FITTED SPACE	TERRACE	15,234	1,667	
3	LET	AVAILABLE – NEW FITTED SPACE	9,660	364	
2	AVAILABLE – UNFITTED	TERRACE	17,178	127	–
1	AVAILABLE – UNFITTED	TERRACE	14,248	994	–
G	AVAILABLE – UNFITTED	RECEPTION & CAFÉ	2,692	–	
		TOTAL	129,183	13,055	



# GROUND FLOOR

- Office
- Cycle storage
- Reception & café
- Shared services & building management

OFFICE

2,692

SQ FT

250

SQ M

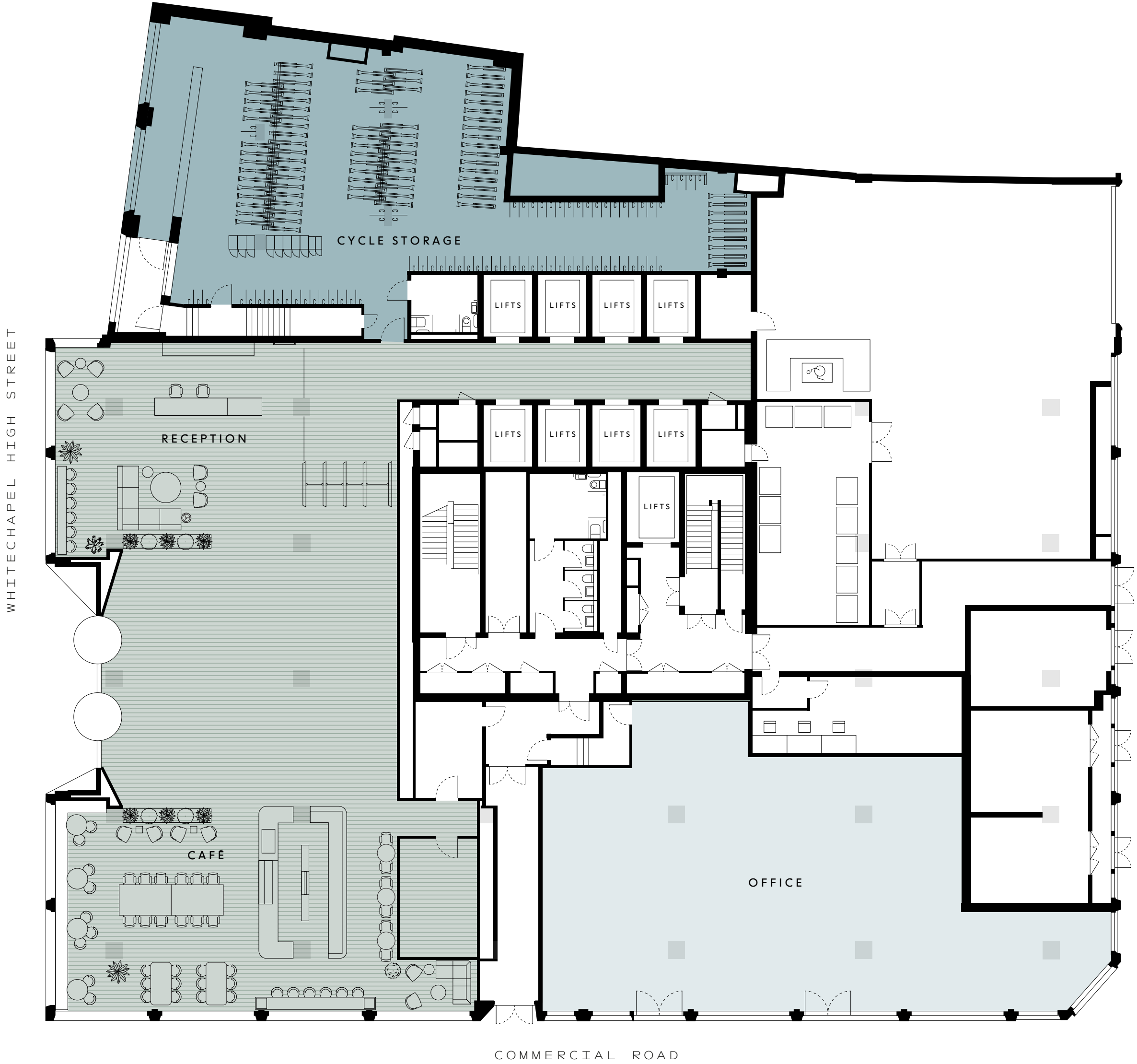
RECEPTION & CAFÉ

5,254

SQ FT

488

SQ M





# THIRD FLOOR

New fitted office
Let
Shared services
Terrace

SPACE BREAKDOWN

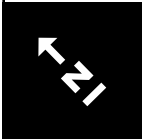
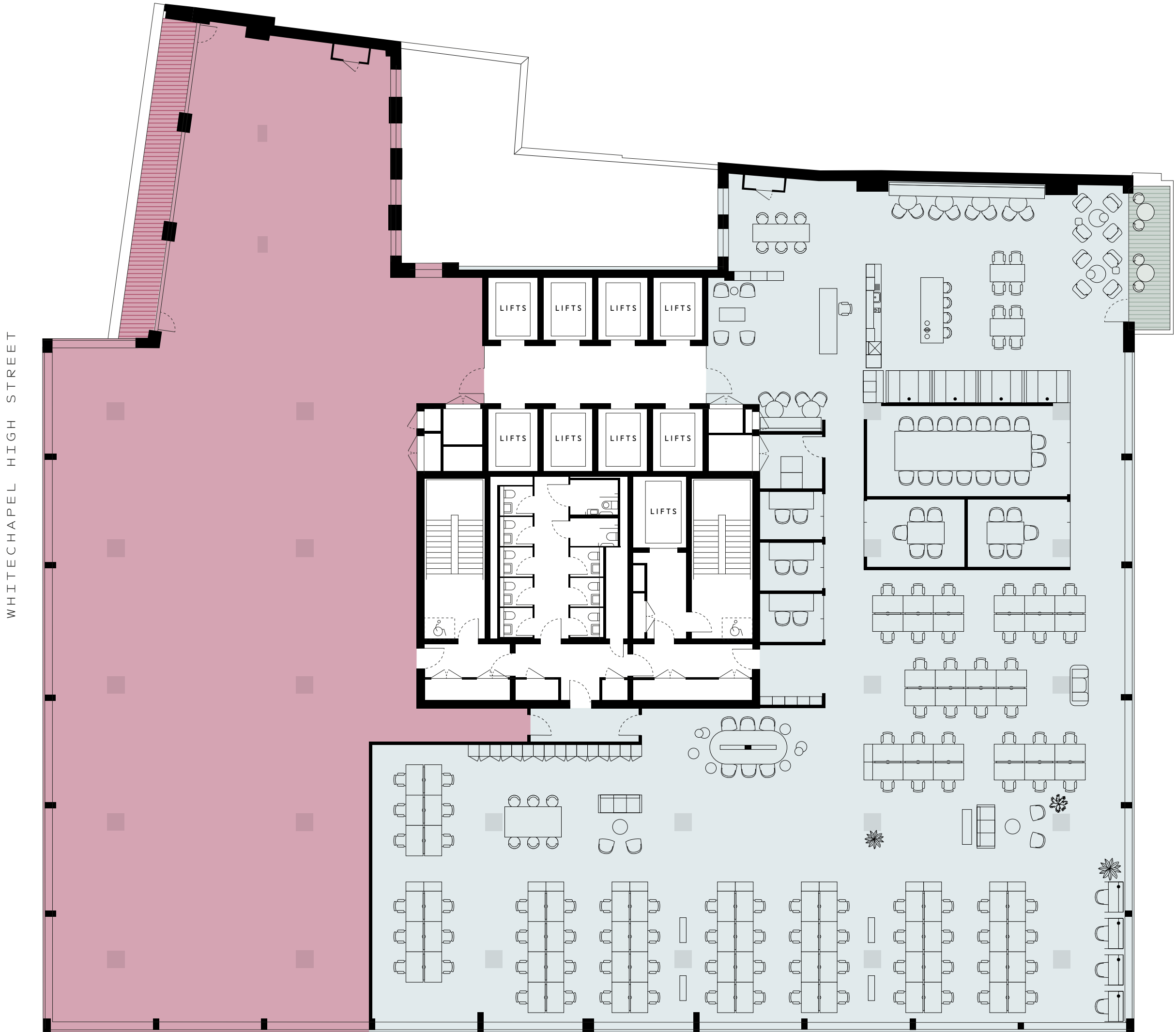
- 1 x Reception
- 1 x Tea Point
- 1 x Comms
- 1 x Print Area
- 64 x Desks (1400)
- 4 x Open Collab
- 3 x 2p Meeting
- 2 x 5p Meeting
- 1 x 1p Meeting
- 16 x Lockers/Coats (@5H lockers = 80)

OFFICE

16,746 SQ FT | 1,556 SQ M




TERRACE

364 SQ FT | 34 SQ M





# FOURTH FLOOR

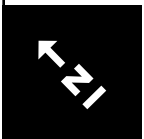
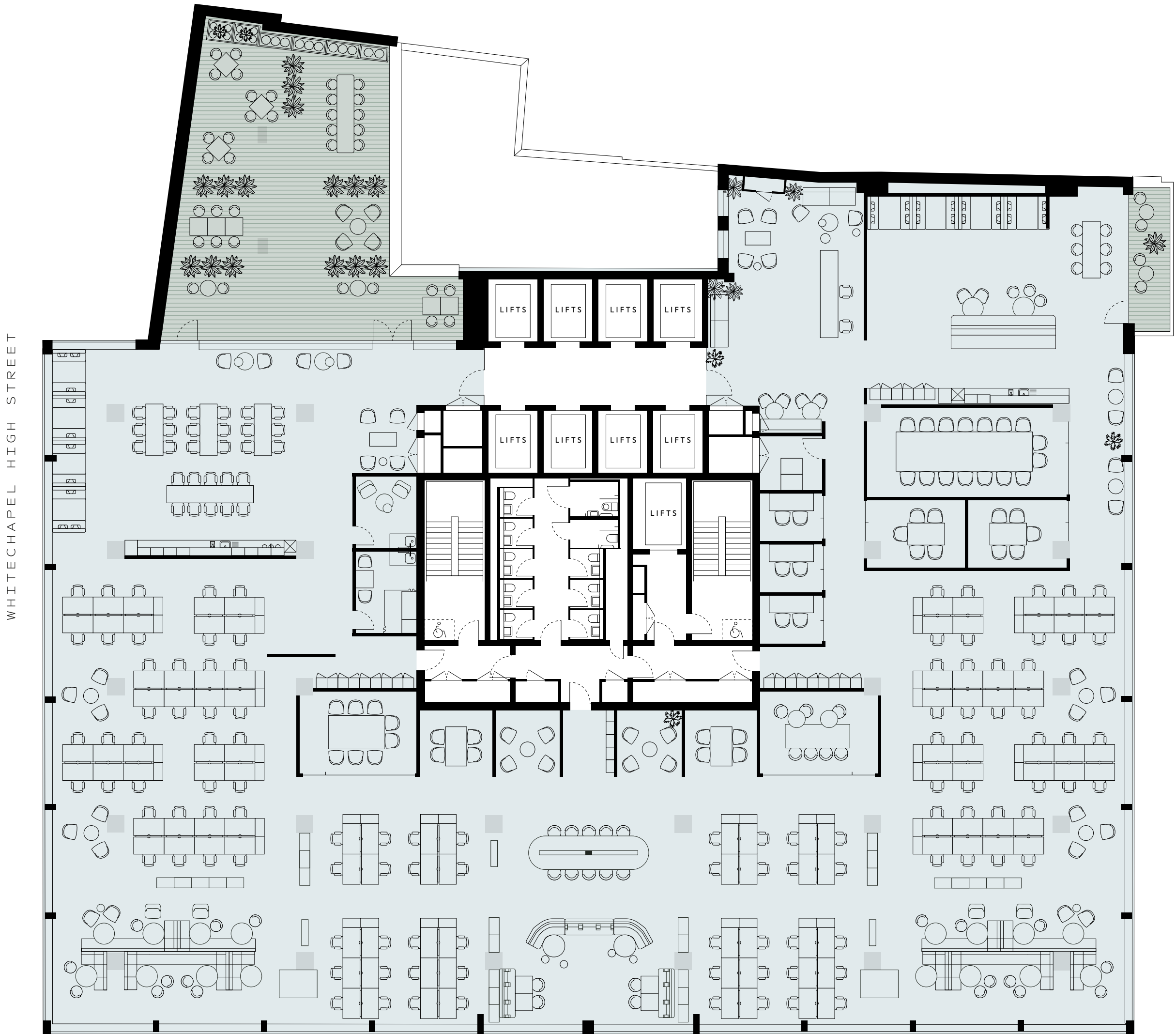
 New fitted office available    Core services    Terrace

## SPACE BREAKDOWN

- 1 x Reception
- 2 x Tea Point
- 1 x Comms
- 1 x Print Area
- 1 x Wellness
- 1 x First Aid Room
- 112 x Desks (1400)
- 3 x Open Collab
- 3 x 2p Meeting
- 2 x 5p Meeting
- 1 x 8p Meeting
- 1 x 16p Meeting
- 1 x AV Room
- 24 x Lockers/Coats (@5H lockers = 120)

OFFICE  
**15,234** SQ FT | **1,415** SQ M

TERRACE  
**1,667** SQ FT | **155** SQ M



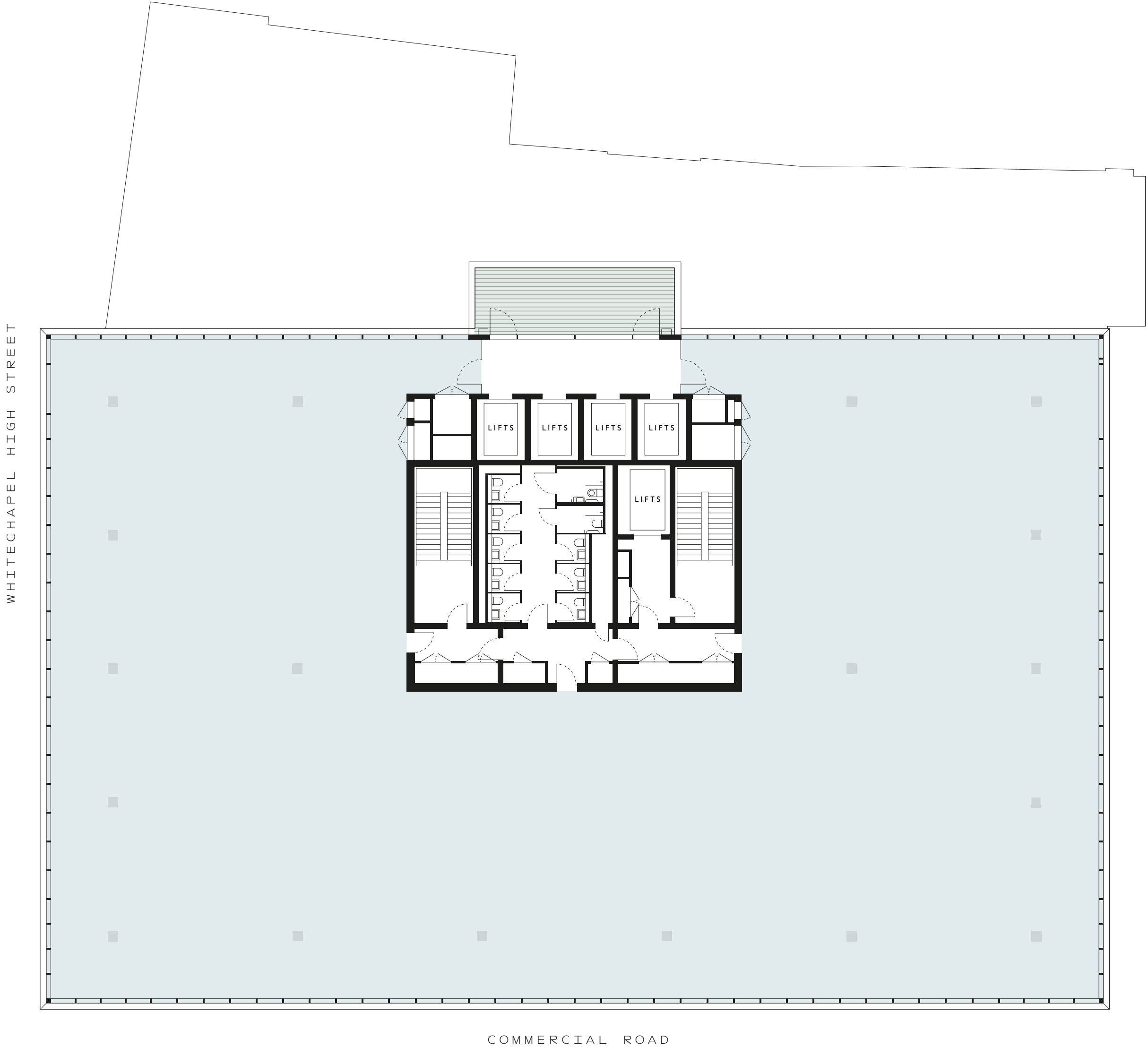


# SEVENTH - ELEVENTH TYPICAL FLOOR

Office Shared services Terrace

OFFICE  
13,862 SQ FT | 1,288 SQ M

TERRACE  
299 SQ FT | 28 SQ M





7TH - 11TH TYPICAL FLOOR

# INDICATIVE LAYOUT COLLABORATIVE

Office Shared services Terrace

SPACE BREAKDOWN

- 1

x Reception
- 2

x Tea Points
- 1

x Communication Room
- 1

x Print Area
- 1

x Wellness Room
- 1

x First Aid Room
- 112

x Desks
- 8

x Breakout / Informal Meeting
- 6

x 2p Meeting Rooms
- 2

x 4p Meeting Rooms
- 3

x 8p Meeting Rooms
- 1

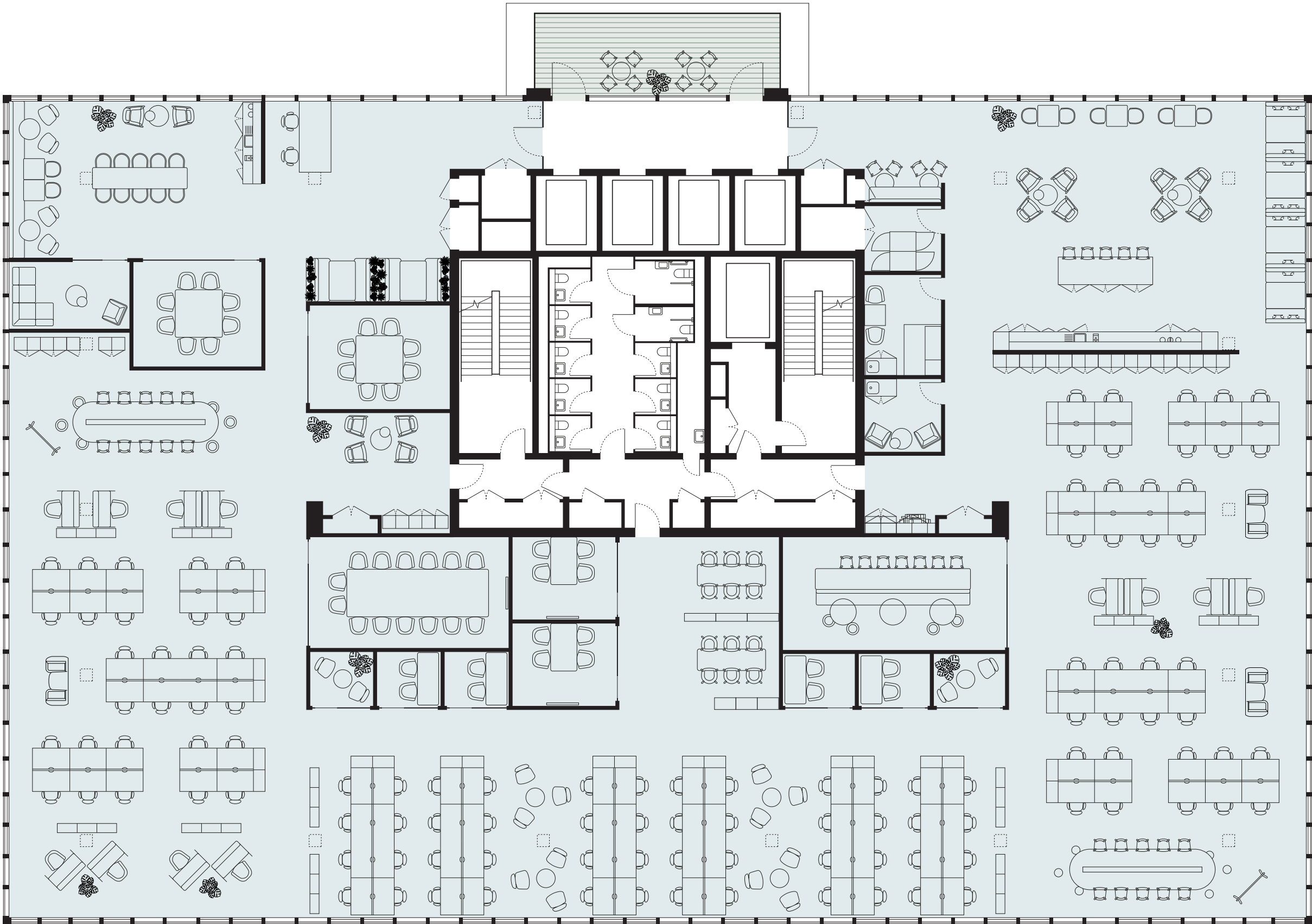
x 16p Meeting Room
- 1

x AV Room
- 23

x Lockers/Coats (@5H lockers = 115)

OFFICE  
13,862 SQ FT | 1,288 SQ M

TERRACE  
299 SQ FT | 28 SQ M





7TH - 11TH TYPICAL FLOOR

INDICATIVE  
LAYOUT  
TRADITIONAL

Office Shared services Terrace

SPACE BREAKDOWN

- 80 x Desks

22 x 2 Person Offices (44 Desks)

2 x Focus Rooms

2 x Phone Call Rooms

8 x Booths

6 x Breakout / Informal Meeting
- 1 x 4 Person Meeting Room

2 x 6 Person Meeting Rooms

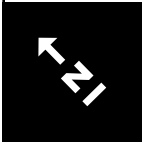
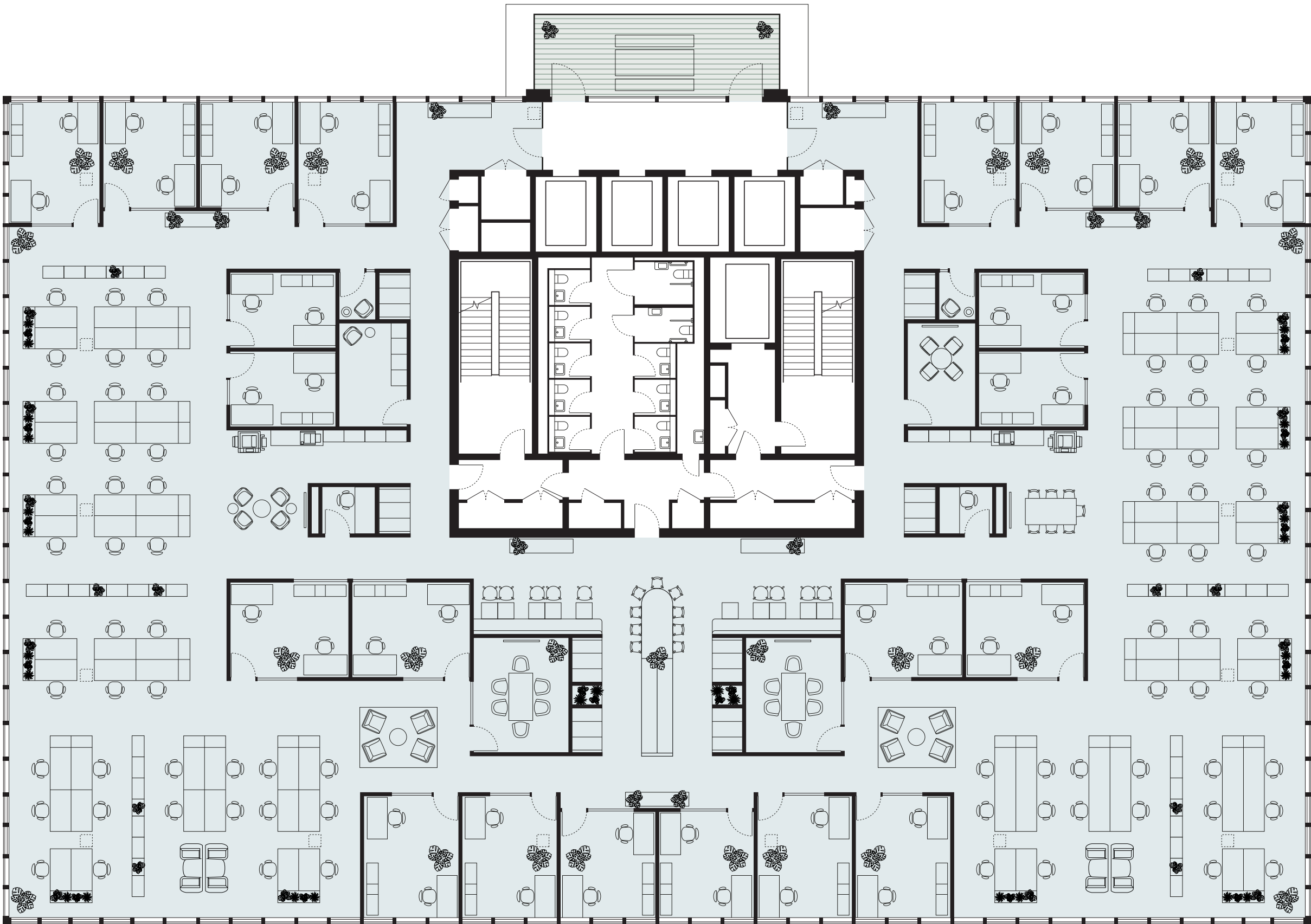
1 x Wellness Room

1 x Large Teapoint with Seating

1 x External Terrace with Seating

OFFICE  
13,862 SQ FT | 1,288 SQ M

TERRACE  
299 SQ FT | 28 SQ M





7TH - 11TH TYPICAL FLOOR

INDICATIVE  
LAYOUT  
LEGAL

Office Shared services Terrace

SPACE BREAKDOWN

- 1 x 118 Person Cafeteria

1 x Kitchen

1 x Reception with Welcome Lounge

2 x 4 Person Meeting Room

1 x 6 Person Meeting Room

4 x 8 Person Meeting Room

4 x 12 Person Meeting Room

1 x 14 Person Meeting/Dining Room

1 x 16 Person Meeting/Dining Room
- 1 x Client Tea point with Breakout

1 x Client Touch Down & Print Point

2 x Phone Rooms

1 x Client WC

1 x Client DDA WC

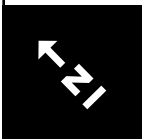
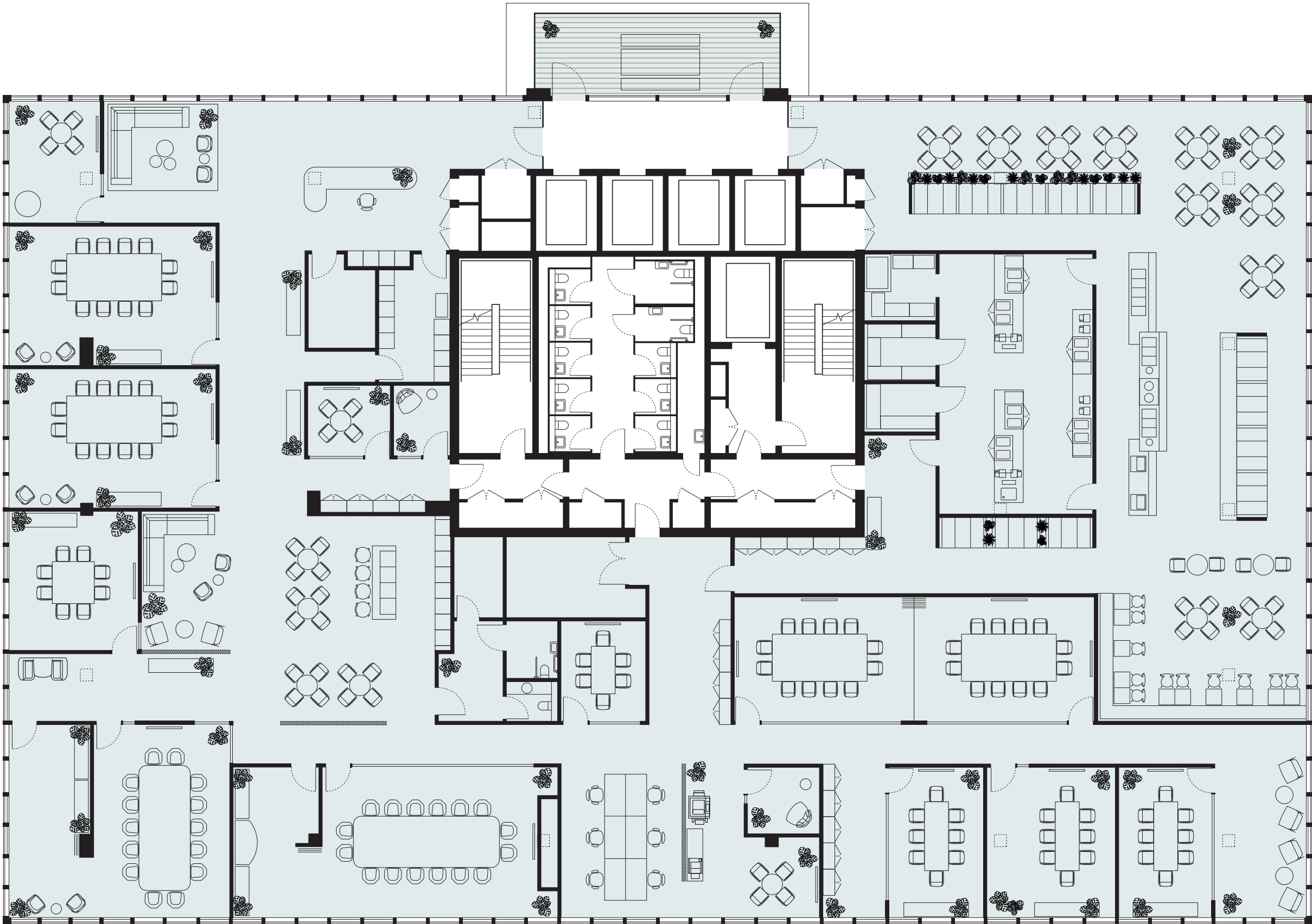
1 x Furniture Store

1 x Cleaner Cupboard

1 x External Terrace With Seating

OFFICE  
13,862 SQ FT | 1,288 SQ M

TERRACE  
299 SQ FT | 28 SQ M



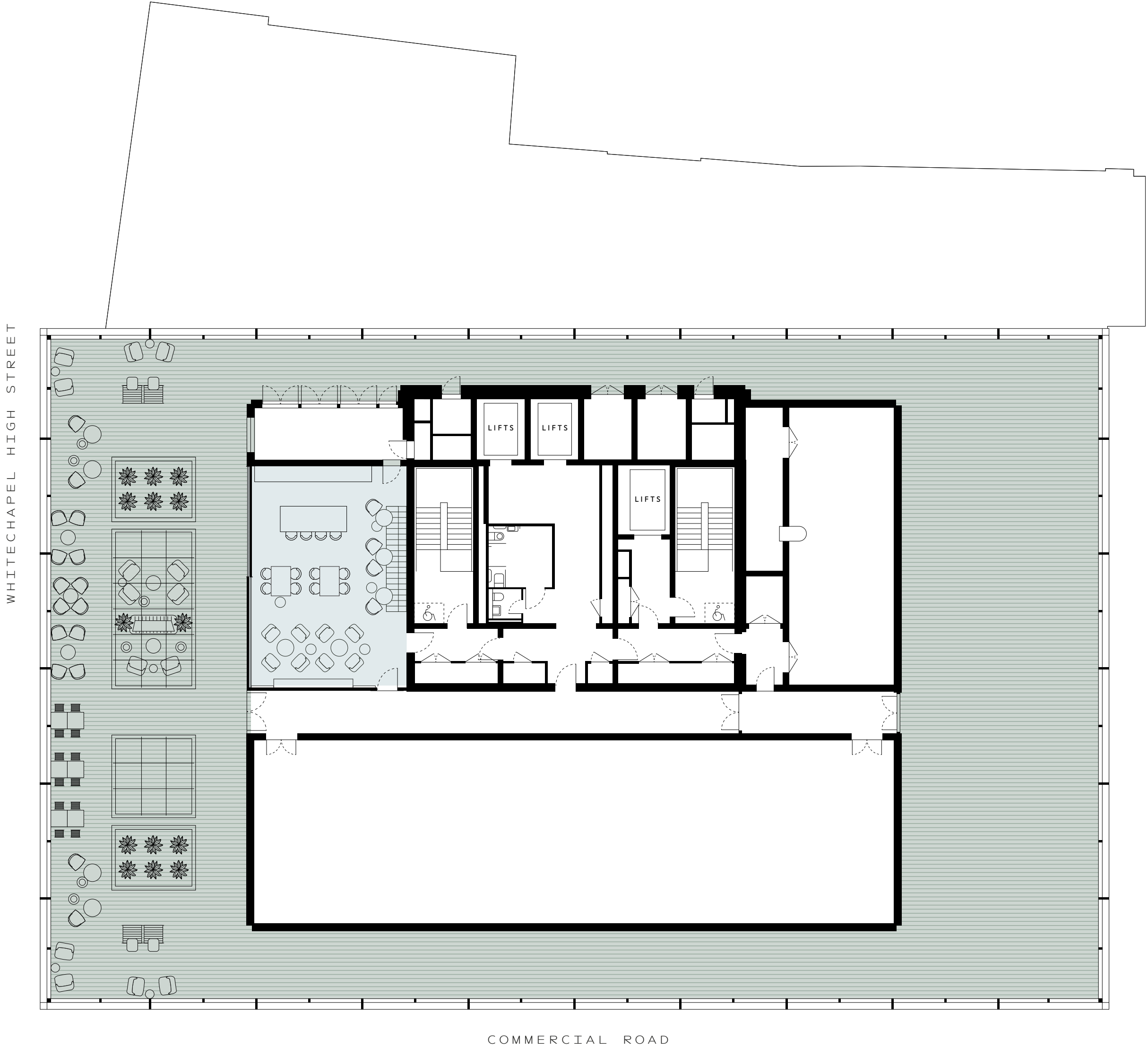


# BUSINESS LOUNGE & COMMUNAL TERRACE

Business Lounge Shared services Terrace

BUSINESS LOUNGE  
818 SQ FT | 76 SQ M

COMMUNAL TERRACE  
8,408 SQ FT | 781 SQ M





# SHOW-STOPPING VIEWS

Private terrace space on every floor, with a 360° communal rooftop entertainment space on level 12.







# ROOFTOP ENTERTAINMENT

With panoramic views, The Rowe offers 8,408 sq ft of rooftop entertainment space for occupiers to host private events. Paired with an adjoining business lounge, it's the perfect venue for staff, clients, and guests.





# WELLNESS THAT WORKS

From the ground-floor cycling facilities to the rooftop entertainment space, The Rowe prioritises everyone’s physical and mental health. Located on the doorstep of Cycle Superhighway 2.

284

Cycle spaces



Located on the Cycle Superhighway 2, connecting Aldgate to Stratford

245

Lockers



100% fresh air intake with high ventilation rates and sensors

15

Showers



Almost 50% of the large windows are openable



A leafy roof terrace and outside space on every floor





# ARTISTS IN RESIDENCE

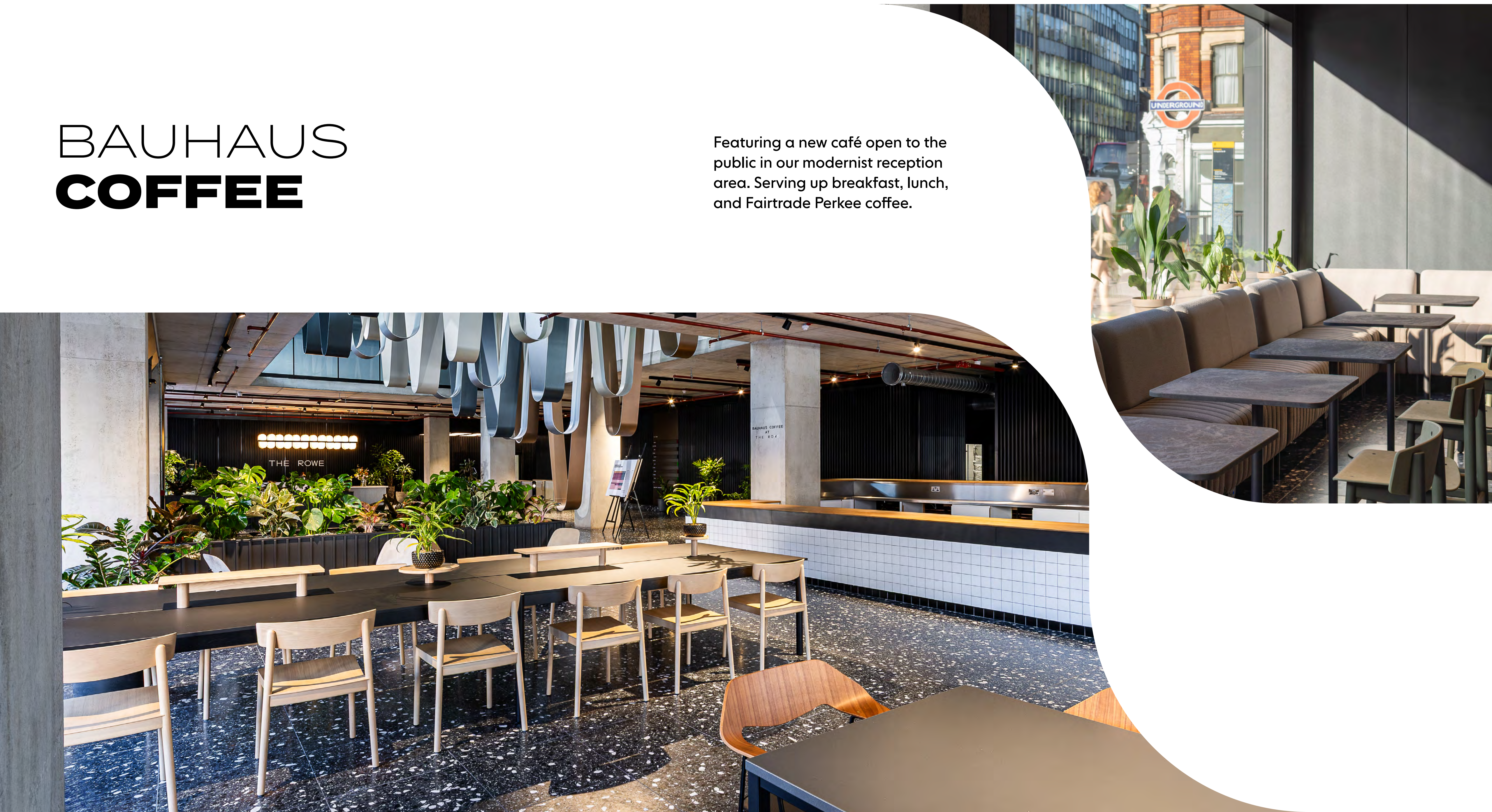
An iconic building radically transformed by AHMM and featuring striking art from Yinka Ilori and Paul Cockside.





# BAUHAUS COFFEE

Featuring a new café open to the public in our modernist reception area. Serving up breakfast, lunch, and Fairtrade Perkee coffee.





# KOBA AT THE ROWE

**COMING Q3 2025**

We're proud to be Koba's first London space, demonstrating our shared passion for sustainability and wellbeing. Whether you're after a spacious boardroom or a dedicated desk, Koba has the co-working space you need, all within a beautifully designed, sustainable office.





# NOWHERE **QUITE LIKE IT**

Immersed in the buzz of Whitechapel, here you're surrounded by the cafés, pubs, and culture of Shoreditch and the city.



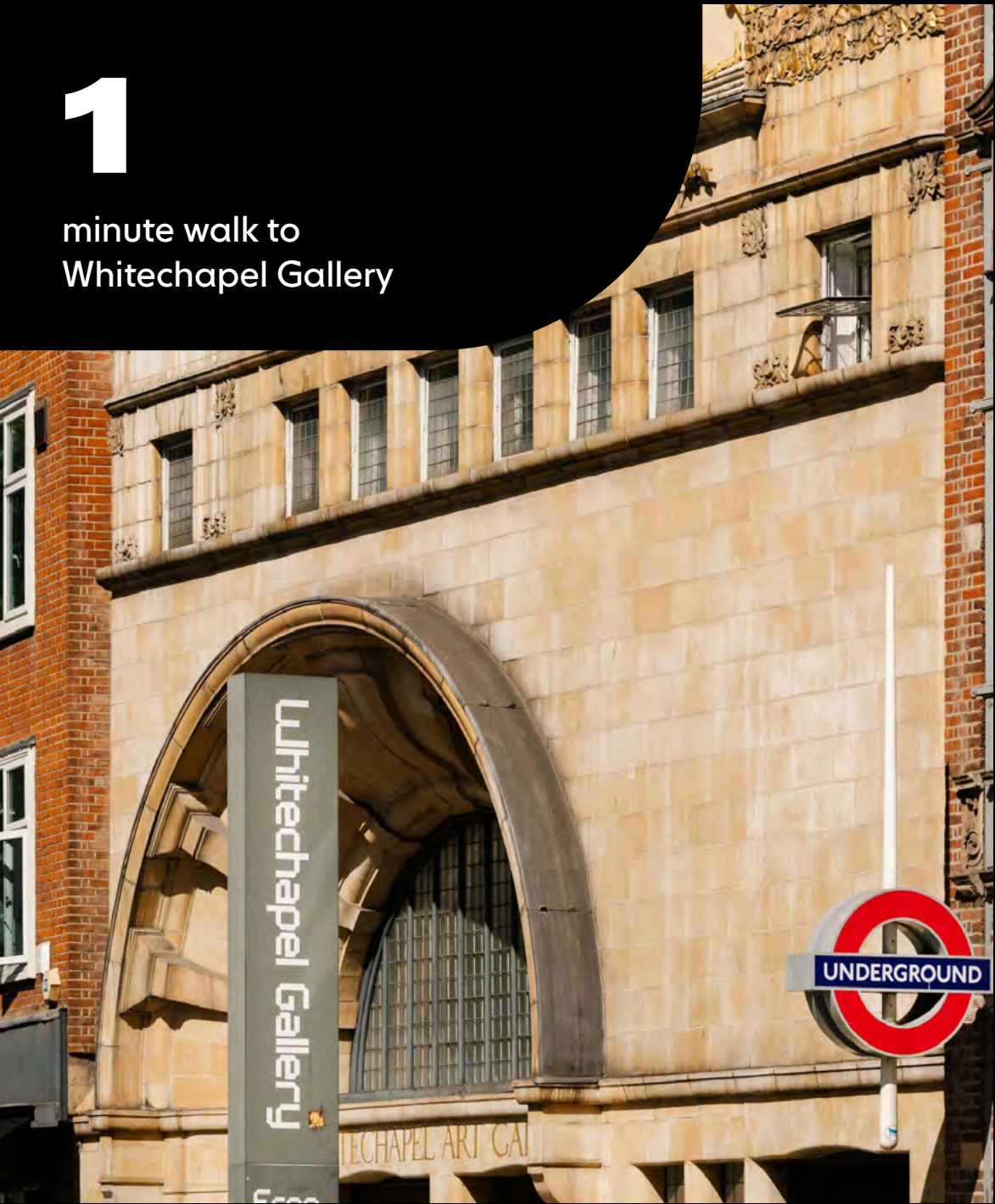


# STACKED WITH CULTURE

WHITECHAPEL GALLERY	1 min walk	ANYTIME FITNESS	5 mins walk
BRICK LANE	3 mins walk	TRADE COFFEE	7 mins walk
THE CURZON CINEMA	4 mins walk	HUNGRY DONKEY	7 mins walk
SOM SAA	5 mins walk	URBAN FITNESS	7 mins walk
THE BUXTON	5 mins walk	BUBALA	8 mins walk
THE CULPEPER	5 mins walk	ELDER GARDENS	13 mins walk

1

minute walk to  
Whitechapel Gallery



3

minutes walk to  
Brick Lane



5

minutes walk to  
The Buxton



13

minutes walk to  
Spitalfields

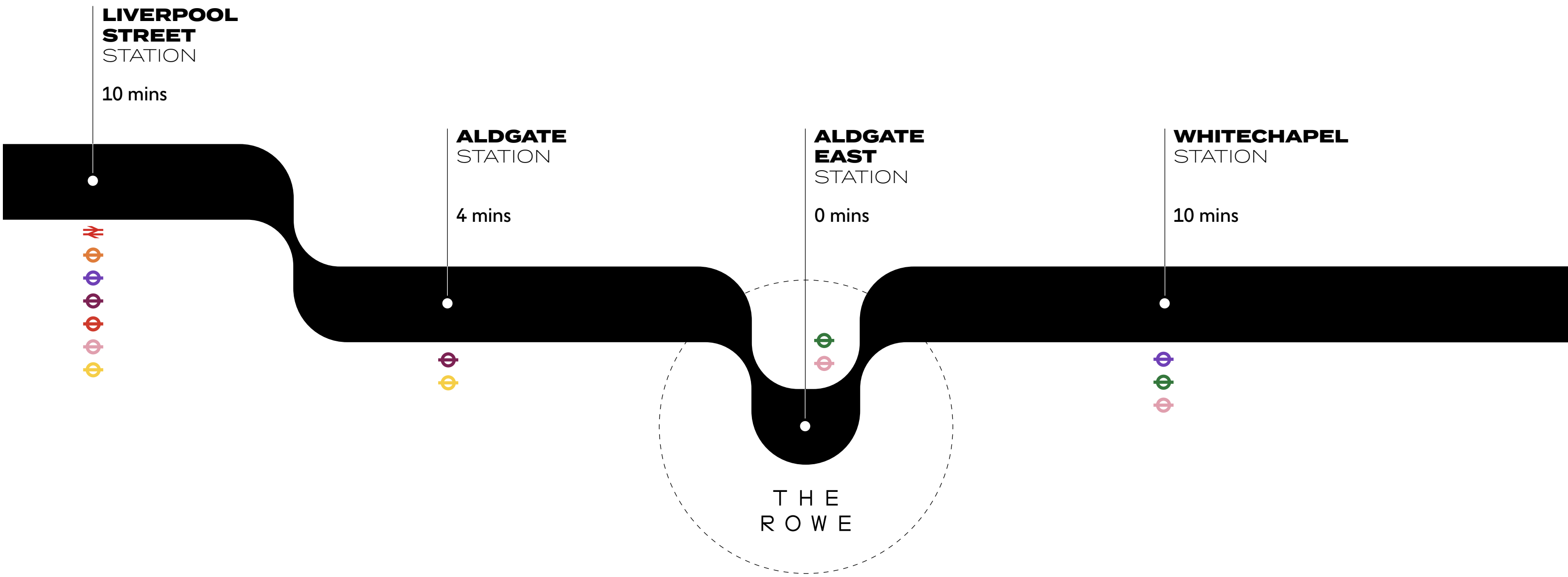




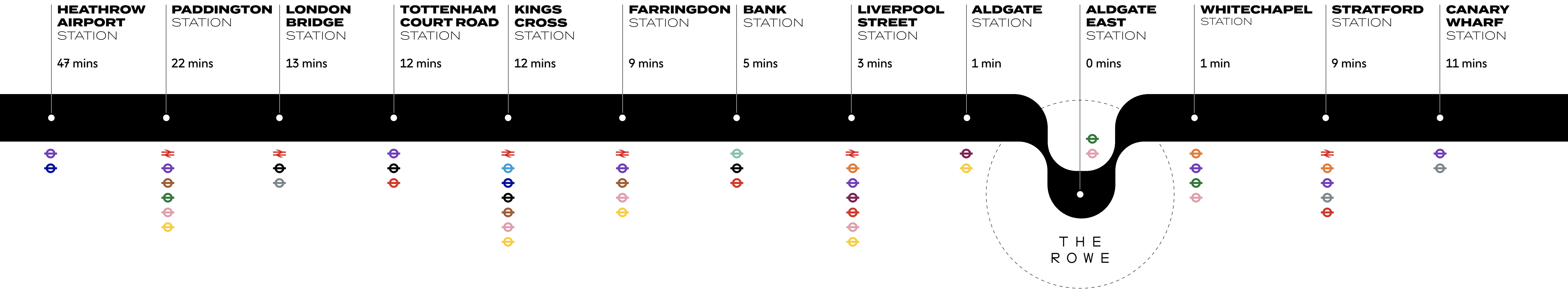
# ALL THE RIGHT CONNECTIONS

With Aldgate East station right on the doorstep, The Rowe has easy access all over London.

## BY FOOT



## BY TUBE





# FUTURE FACING

Setting new benchmarks for design and sustainability,  
The Rowe emits 45% less carbon than the average UK  
office. One day, all workspace will be like this.



BREEAM ‘Excellent’ New  
Construction certification

100%

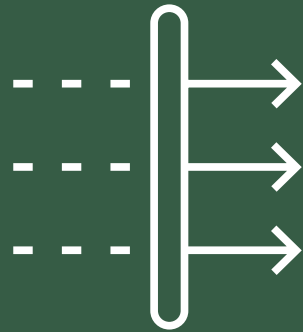
Renewable electricity

45%

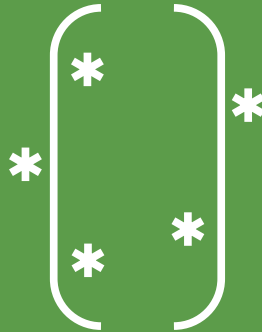
Less carbon emissions  
than standard  
office buildings



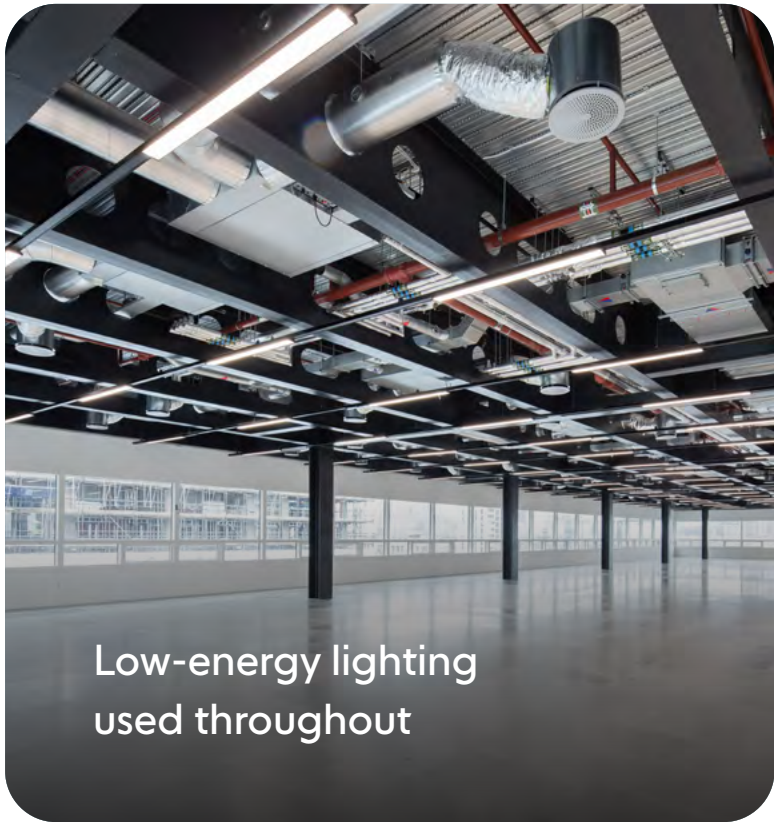
Outdoor space on every  
floor and a large communal roof  
garden



Mechanical ventilation systems  
with heat recovery



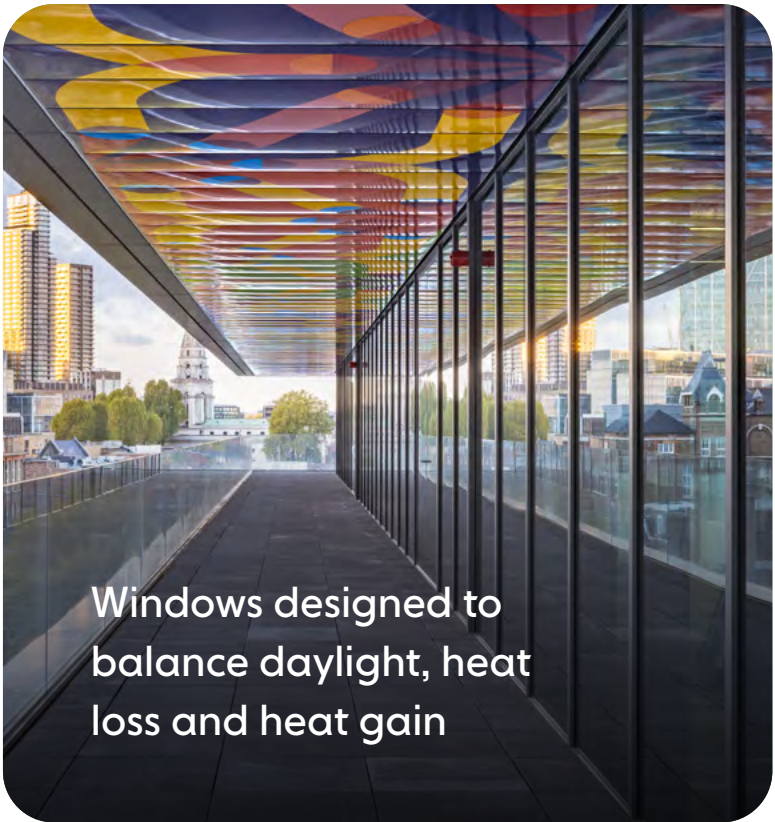
Chilled beam system  
on lower floors



Low-energy lighting  
used throughout



Smart-sub metering  
enabling occupiers to  
monitor electricity usage



Windows designed to  
balance daylight, heat  
loss and heat gain



Sustainably sourced materials,  
prioritising low embodied  
carbon materials



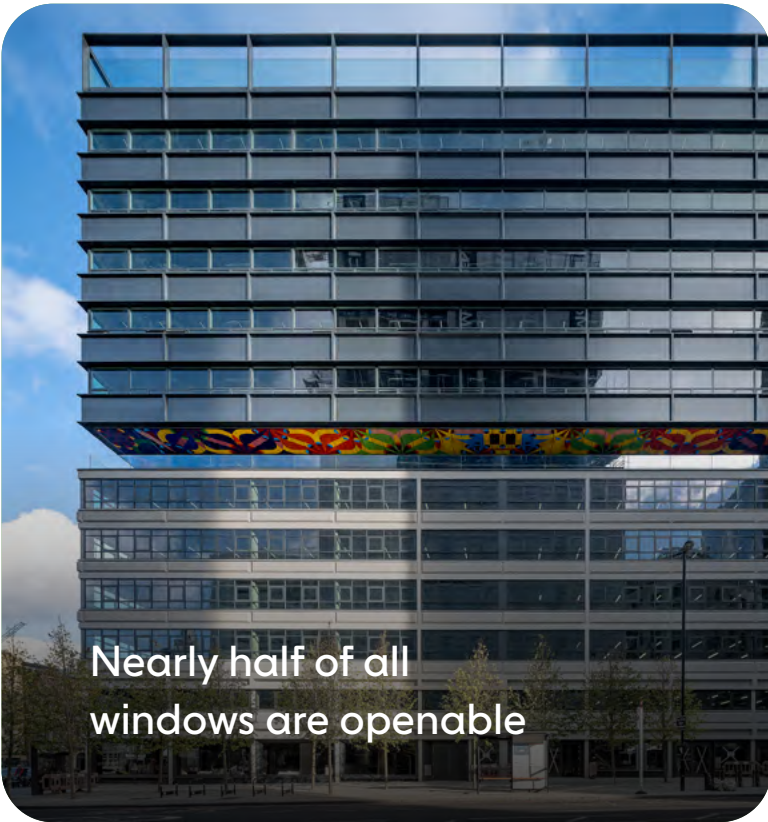
WiredScore  
‘Platinum’ rating



Smart building features  
with Smart Spaces app



Targeting  
SmartScore certification



Nearly half of all  
windows are openable



Highest efficiency energy  
equipment throughout to reduce  
operational costs



# TECH-POWERED WORKSPACE

Targeting SmartScore Platinum accreditation, The Rowe provides an innovative, future-proofed workspace that uses data and cloud-based systems to optimise its – and your – performance.

Business lounge



The workplace experience app that puts occupiers first. Smart Spaces makes it easier for you to manage your working day, all from your mobile devices.

Combining Smart Spaces intelligence with tech-powered workspace, The Rowe is a building to inspire and engage.



WiredScore  
PLATINUM

WiredScore certification recognises and promotes best-in-class digitally connected buildings across the globe.

## CONNECTED

Limitless fibre direct to floors provides the fastest internet speeds available for offices in the UK

## WELLBEING

Cutting edge systems constantly monitor air quality and hone the working environment

## SERVICES

A platform for booking events and amenities, and for gaining access to the building and local services

## SUSTAINABILITY

Monitoring the building’s utility data to optimise efficiencies and environments

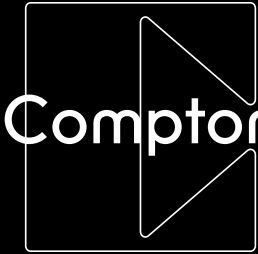
## ARRIVAL

A centralised system and smart wayfinding deliver a seamless arrival experience

## CYBERSECURITY

A clear strategy for the building’s network and systems offers unrivalled protection





Shaun Simons  
ss@compton.london  
+44 (0) 7788 423 131

Joshua Miller  
jm@compton.london  
+44 (0) 7917 725 365

Sonia Oberoi  
so@compton.london  
+44 (0) 7483 882 598

Oliver Jay  
oj@compton.london  
+44 (0) 7903 714 187



Sarah Shell  
sarah.shell@jll.com  
+44 (0) 7808 290 853

Jason Collier  
jason.collier@jll.com  
+44 (0) 7525 159 861

Katie Sommer  
katie.sommer@jll.com  
+44 (0) 7703 608 316

Claire Allen  
claire.allen@jll.com  
+44 (0) 7872 107 543

**THEROWE.LONDON**